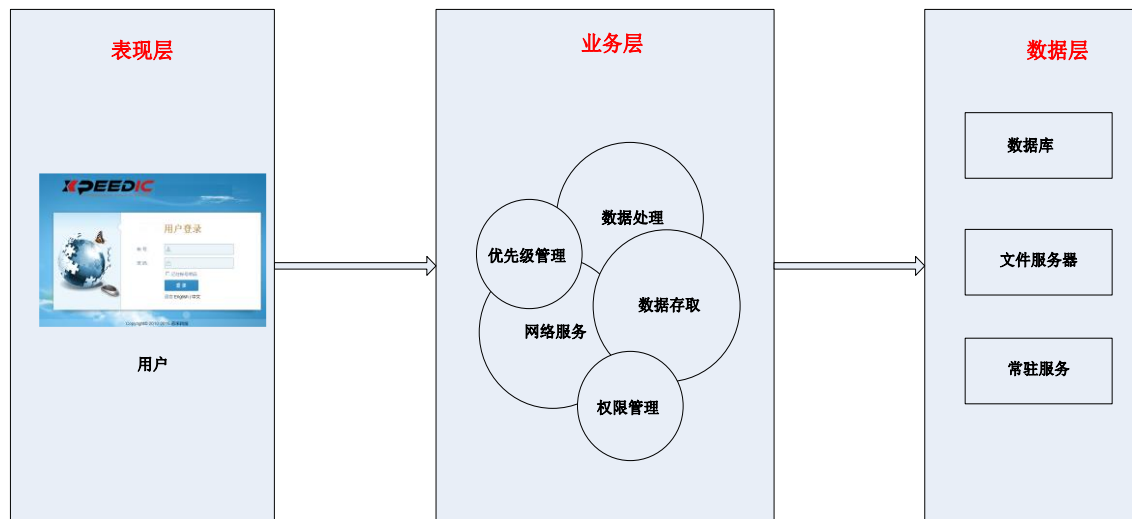


LibManager: Library Management Platform

LibManager is a web-based library management system. This system is used to import, search and manage various libraries, including HDL, IPD and PDK. The system provides operational history information and version control of the library. As a web application system based on B/S architecture, it's simple to set-up and maintain. Anyone with IE browsing experience can get accustomed to it in a matter of minutes. LibManager ensures data access consistency by introducing a version control system, publishing and updating HDL libraries regularly to file servers throughout the whole company. LibManager can automatically compare and match the PDM systems when users enter and import library files, or produce complete and consistent library files, instead of manual maintenance to improve library correctness and productivity. Powerful component search and download features help users to find, modify, re-use devices and review library documents. Statistical graphs help users to see detailed data about library category, device number, utilization ratio, and even library management effort.

LibManager Solution

As a web based library management platform, LibManager uses three layer distributed architecture to ensure system scalability and flexibility. The presentation layer is the first layer to interact with business layer via TCP/IP, Java, and automated test scripts to provide excellent user experience. The business layer in charge of priority, queue management and service processing. The last data layer is used to manage databases, FTP servers and more.



System Architecture

Key Points

- A unified platform to search and manage your IP address and libraries, including HDL, IPD, PDK library and more.
- Based on B/S architecture, so it's simple to install, upgrade and play.
- Supports the three major browsers for better usability; Chrome, IE and Firefox.
- Built-in version control system ensures library data access consistency and keeps operation and modification history to allow effortless traceability.
- Ensures system stability and security with residency services, monitoring services and communication services.
- Distributed file and database management service will produce complete and consistent library files instead of manual maintenance to improve library correctness and productivity.

- Supports several user roles with different access permission, including administrator, manager, and basic user.
- Publishing and updating HDL, PDK and IPD library regularly to unified share paths, and monitored by a timing service.
- Statistical graphs help users get detailed information about library management.

FEATURES

User Login

Supports user login with both English and Chinese versions, and default settings are consistent with your browser. LibManager supports the three major browsers for better usability; Chrome, IE and Firefox.

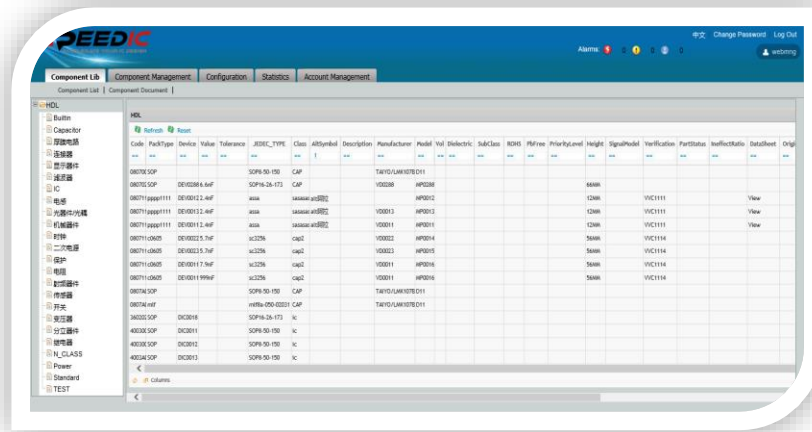


User Login

Component List

LibManager powerful lookup and download modules help users to quickly go through library databases and gather what they want. The search style is quite similar to EDA design

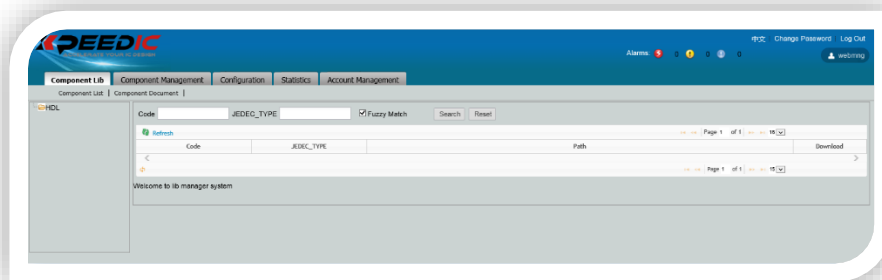
tools for quick start-up, and LibManager Class uses regular expressions to match search strings. All device categories properties are listed in the search table.



Component List

Component Document

In the component document page, it's simple for users to search and download device description documents, and also review library change background and history.

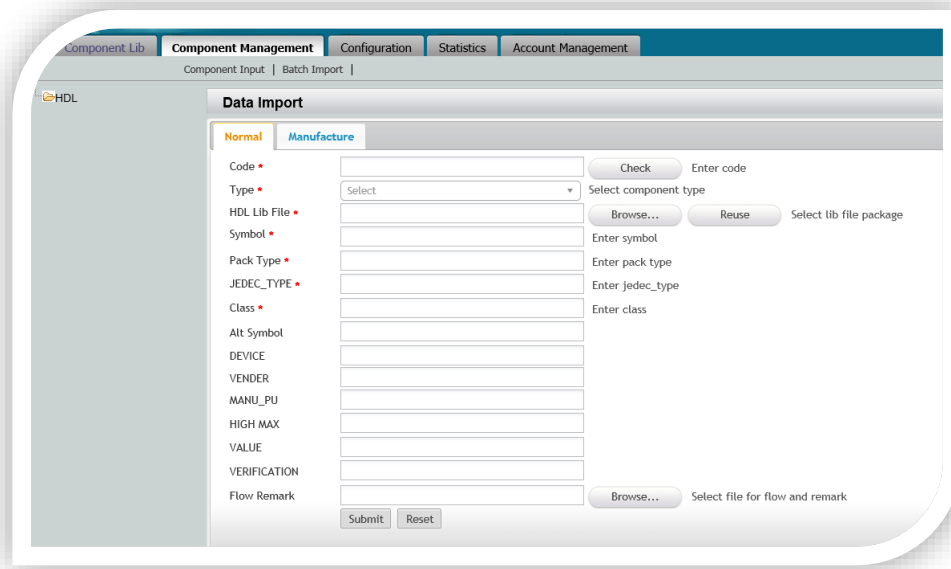


Component Document

Component Import

The components of LibManager can be imported with single or batch mode. For single mode, users need to fill in key and inserted properties, and upload or reuse existing library files. For batch mode, one Excel file with predefined keys and inserted properties will be

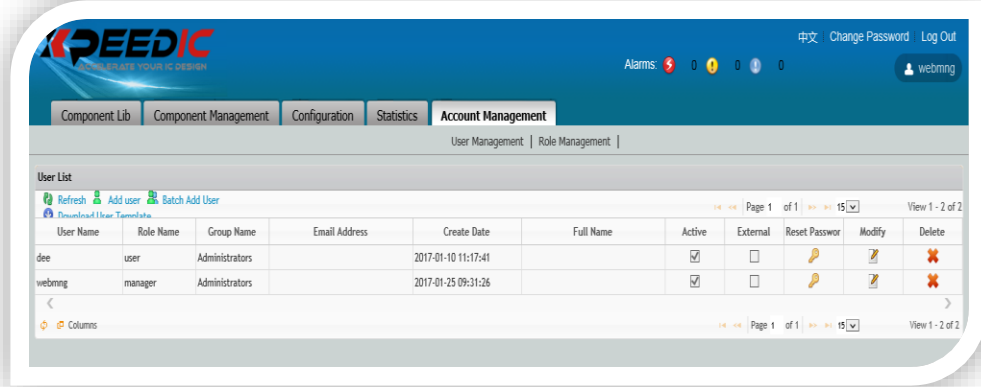
imported into LibManager, the component importing service will extract, analyze and import this data automatically. All imported components, operation history and comments will be managed under the version control system for quick traceability and data consistency.



Component Import

Account Management

LibManager supports users to customize user roles with different base priority and access permission in role management page. LibManager has several built-in user groups, including administrator, manager and basic user. Administrators are in charge of LibManager system maintenance and configuration. Managers have the permission to manage user accounts and email addresses, import domain users via batch mode into LibManager. It's very flexible to define user's access permissions according to user role and user group.



Account Management

Component Configuration

LibManager component key and inserted properties are different per device category, so they are all configurable and customizable based on user requirements. User can also define code conventions and add display options to uniquely identify devices.

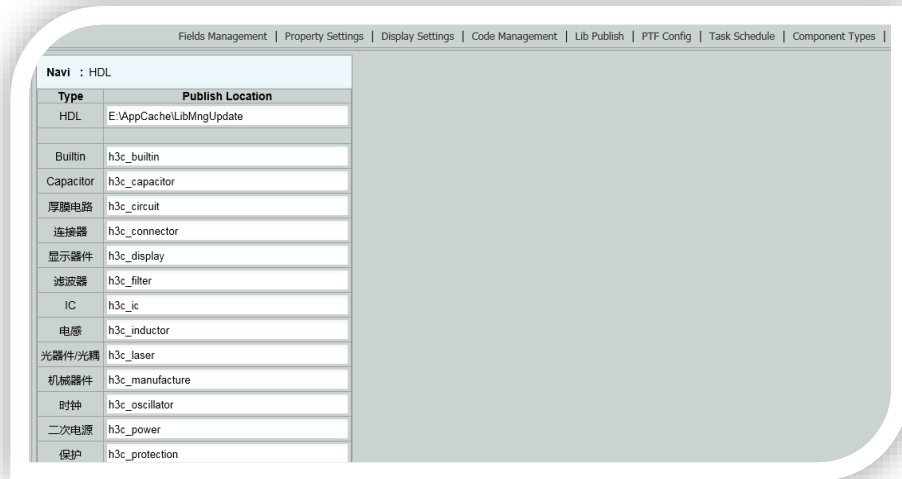


No.	Property Name	Type	Length	Alias(EN)	PTF Column	PDM Column	Modify	Delete
1	Code	String	64	Code	CODE	CODE		
2	Cell	String	128	Cell	Cell	Cell		
3	原理图符号	String	128	Symbol	SYMBOL	SYMBOL		
4	封装类型	String	64	PackType	PACK_TYPE	PACK_TYPE		
5	Device	String	128	Device	DEVICE	DEVICE		
6	JEDEC_TYPE	String	64	JEDEC_TYPE	JEDEC_TYPE	JEDEC_TYPE		
7	器件类型	String	64	Class	CLASS	CLASS		
8	AltSymbol	String	128	AltSymbol	ALT_SYMBOLS	ALT_SYMBOLS		
9	Description	String	200	Description	DESCRIPTION	DESCRIPTION		
10	厂家	String	64	Manufacturer	VENDOR_NAME	VENDOR_NAME		
11	厂家型号	String	128	Model	MANU_PU	MANU_PU		
12	小类名称	String	64	SubClass	SUBCLASS	SUBCLASS		
13	ROHS	String	64	ROHS	ROHS	ROHS		
14	无铅	String	64	PbFree	PB_FREE	PB_FREE		
15	优选等级	String	64	PriorityLevel	PRIORITYLEVEL	PRIORITYLEVEL		

Component Configuration

Publish Configuration

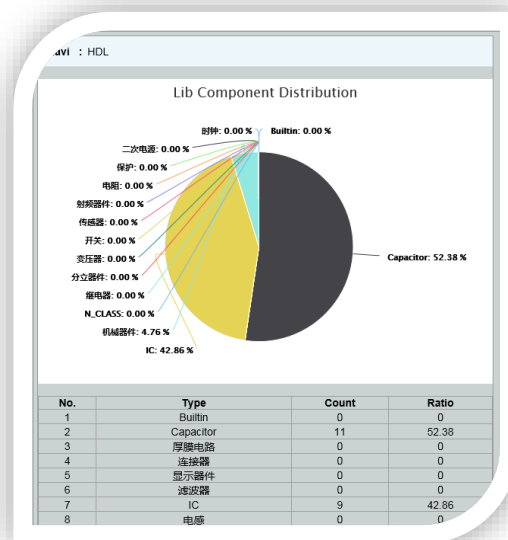
LibManager will sync with PDM system to keep library consistency, and publish HDL library, PDK and IPD to user specified share path at regular interval.



Publish Configuration

Statistical Graph

Statistical graph help user get detailed information about library categories, device numbers, utilization ratio, and even library management efforts.



Statistical Graph

US Office

Seattle

14205 SE 36th St, Bellevue, WA
98006

Silicon Valley

19925 Stevens Creek Blvd #100
Cupertino, CA 95014

sales_us@xpeedic.com

China, Shanghai Office

No.608, ShengXia Road, Building
2, Room210-211, Pudong New
Area, Shanghai, 201203

Tel: 86-021-61636350

sales@xpeedic.com

China, Suzhou Office

No.2358, Changan Road, Bldg 1, Floor
5, Wujiang, Suzhou, 215200

Tel: 86 512 63989910

sales@xpeedic.com